

Magnetism:

Magnet - Any material that align themselves in a N-S Direction
North points to North Pole South points to South Pole



Poles (Ends) of Magnets

Like poles repel

Unlike poles attract

N/N Brought near each other

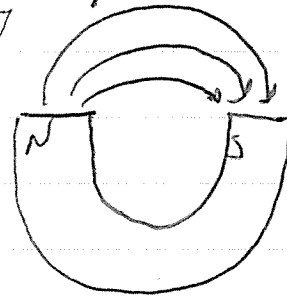
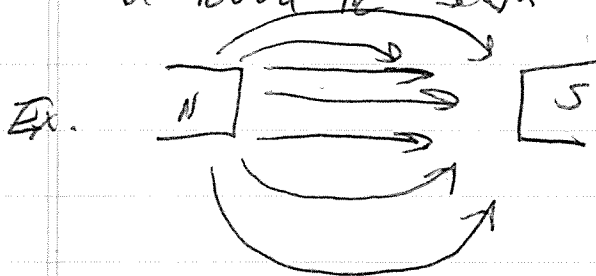
N/S

Magnetic Fields

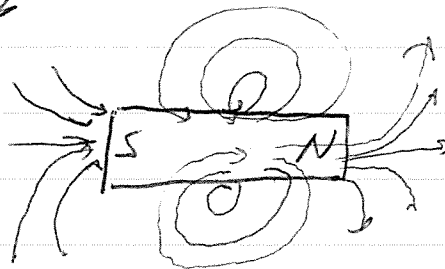
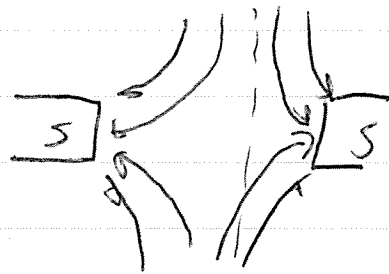
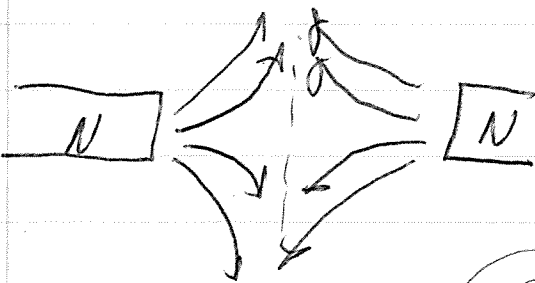
Flux Lines - Used to visualize the magnetic field

* By agreement, field lines point away from the North and toward the South

N → S



Horseshoe Magnet



* Note field lines form a closed loop inside the magnet

Strength of a magnetic field is known as magnetic induction

↑ Number of flux lines in a given area, ↑ magnetic field strength

Unit
T-Tesla